



The **DIGITUS 19" Professional Line (800x800)** match all features that have defined for 600x600 and 600x800mm. cabinet technical specifications.  
 Moreover, **DIGITUS 19" Professional Line (800x800)** series provide more comfort for cable management and maximum cable entry. Effective, functional and smart cable management system simply the installer needs. It enables maximum utilisation of floor space, space saving mix of active and passive equipment. It is designed to offer unrivalled accessibility for high density cabling and fibre installations. Standard delivery configuration is single door opening front door. It also be possible to deliver 2 opening front door. Standard delivery configuration is 2 opening rear door provide space saving in room. As option, front door could be single opening, reinforced with metal frame. It is compatible with all accessories.

## 19" Digitus Professional Line Cabinets and Racks width=800mm. depth=800mm.



### FEATURES

#### \*Easy to access

Front door features a full-length smoked and shatterproof glass door with decorative accent trim reinforced with left/right metal frames and integral locking mechanism.

**Side doors;** lockable, removable complete with slam latches and locks.

**Rear door;** lockable, removable with lock.

Secure, locking front and back doors with spring loaded hinges offer best accessibility even when connecting the cabinets. The door hinge is easily swapped from one side to the other.

All giving you 4-way access to equipment. Front and rear door can be replaced that gives you flexibility for different installations.

#### \*Cable access

Multiple cable entry points provide maximum versatility. There is a rubber edge sliding cover mechanism that protects and fix the cables.

There is a brush on the rear panel that can be positioned on top or bottom (brush entry available on racks of 32U and above)

#### \*Construction

**Rigid welded frame** construction in steel sheet, rapidly dismantled per 4 screw per corner. Corner of bases have welded sockets on each corner that tightly fixed into the columns gives maximum stability.

**Frames** are made with 28-fold design for increased stability.

**Vented Pagoda-style top cover** with built-in space for available top mount cooling system providing protection against dust flow from the top. Besides that it cause a chimney effect to provide passive heat transportation via convection.

**19" mounting angles** (front/2ea. and back/2ea) allow for flexible configuration and adjustable in depth.

**C-rails** (3ea.left + 3ea.right) increase the stability of equipment mounting and fixing shelves in 4 points.

**Levelling feet** is included as a standard feature.

Extensive range of **accessories**.

**Load Carrying Capacity:** 600 kg

#### STANDARDS

\*ISO 9001:2000

\*19" mounting to IEC 297-1

\*Overall cabinet dimensions to IEC 297-2

#### COMPLIANCES

UL and cUL

**IP Protection:** IP40

**Glass :** 4mm Secure and tempered

**Surface Treatment :** Fosfat coating

**Painting :** Ral7035 / Ral9005

**Locks :** Emka Germany

Handle type : KLT- E1150433-03 / Password Code : 9473

O-type : KLT - E7308 / Password Code : 9473

Small O-type : KLT - E7158 / Password Code : 827

### SPECIAL ACCESSORIES for JUMBO TELESKOPIC CABLE TRUNKING

It is designed to protect and hide cable bundles coming from the ceiling. Since the height between ceiling and cabinet isn't known, it is manufactured as telescopic to fit all dimensions.

There is cover for it. When it is closed, it looks really matter and provide professional look.

See accessories for product codes and definitions.

### VERTICAL CABLE MANAGEMENT CHANNELS (left + right)

It is designed to manage large patch cable bundles in front of the cabinet. It is installed through the height of the cabinet, and each U dimension, there is a hole to pass horizontal patch cables on vertical axis.

There is spring hinged cover in front of the vertical cable management panel integral with slam latch. The cover protect and hide all cable bundles.

When it is closed, it looks really matter and provide professional look.

Besides that, it reduce labour cost %20 and save time.

See accessories for product codes and definitions.

### VERTICAL CABLE MANAGEMENT TRUNKING

It is designed to carry large cable bundles through the vertical axis of the cabinet.

From top to bottom, it is continuous with the height of cabinet. Bottom edge of the trunking fit into the cabinet bottom cable entry, top edge of the trunking fit into the cabinet top cable entry. It has holes for cable access for horizontal axis.

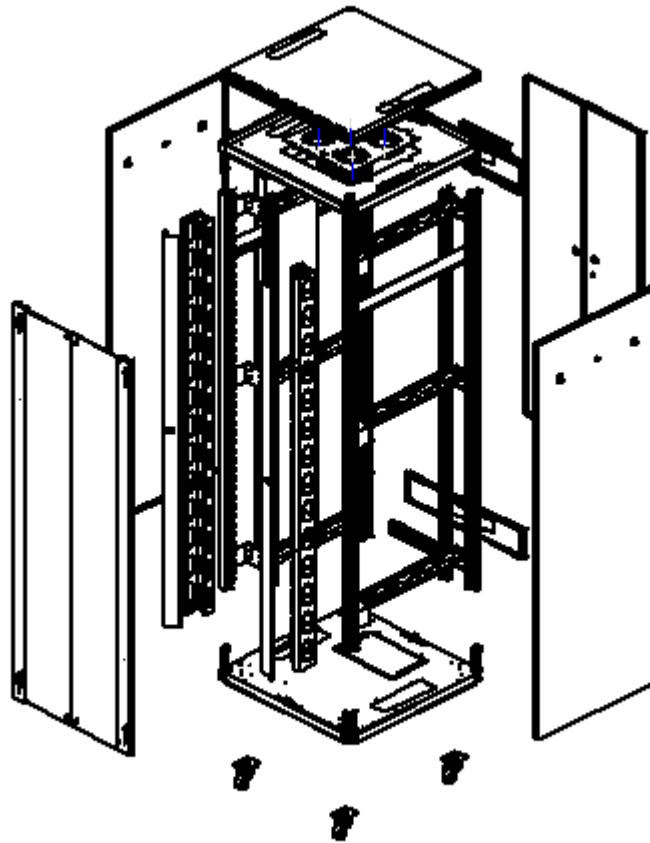
It is punched in a shape to tie the cables.

Since it has a sliding cover on the trunking, cable bundles are hidden and protected. When it is closed, it looks really matter and provide professional look.

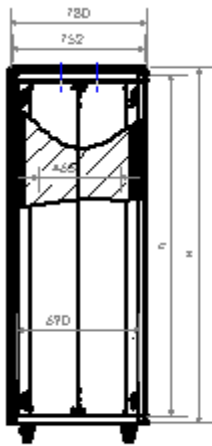
See accessories for product codes and definitions.

## Material Definition and Properties, Thicknesses and Shipment Configuration

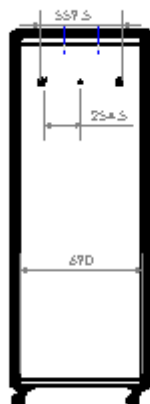
Part Definition	Material thickness	Material definition & properties	Shipment Configuration
Caster Profile	2 mm	GALVANIZED	4 ea.
Upper Case	1,5 mm	DIN EN 10130 – 99 EREGLI DC-01 6112 CRS	1 ea.
Bottom Case	1,5 mm	DIN EN 10130 – 99 EREGLI DC-01 6112 CRS	1 ea.
Front Doors	1,5 mm	DIN EN 10130 – 99 EREGLI DC-01 6112 CRS	2 ea.
19" mounting angles	1,5 mm	DIN EN 10130 – 99 EREGLI DC-01 6112 & GALVANIZED COATING	4 ea. ( 2ea. at front , 2ea. at rear )
Frame	1,5 mm	DIN EN 10130 – 99 EREGLI DC-01 7122 CRS	4 ea.
Side Panel Supports	1,5 mm	DIN EN 10130 – 99 EREGLI DC-01 6112 CRS	2 ea.
C-rails	1,5 mm	DIN EN 10130 – 99 EREGLI DC-01 6112 & GALVANIZED COATING	6 ea.
Fan Tray(unloaded)	1,5 mm	DIN EN 10130 – 99 EREGLI DC-01 6112 CRS	1 ea.
Vertical Cable Management Channels	1,5 mm	DIN EN 10130 – 99 EREGLI DC-01 6112 CRS	2 ea.
Side Doors	1,2 mm	DIN EN 10130 – 99 EREGLI DC-01 7122 CRS	2 ea.
Top Cover	1 mm	DIN EN 10130 – 99 EREGLI DC-01 6112 CRS	1 ea.
Rear Doors	1 mm	DIN EN 10130 – 99 EREGLI DC-01 6112 CRS	2 ea.



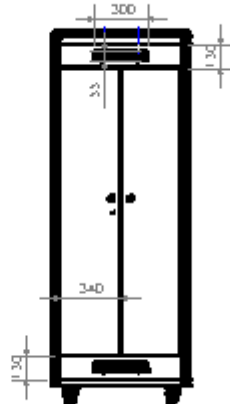
Explode View



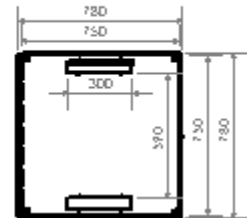
Front View



Side View



Back View



Top View

**19" Digitus Professional Line Cabinets**  
width=800 mm depth=800 mm

Order No	U= (44,45)	h= inside height(mm)	H=outside height(mm)	Total weight (kg.)
148241 / DN-19 32U-8/8	32	1425,60	1550,60	105
135173 / DN-19 32U-8/8	42	1870,10	1995,10	131